

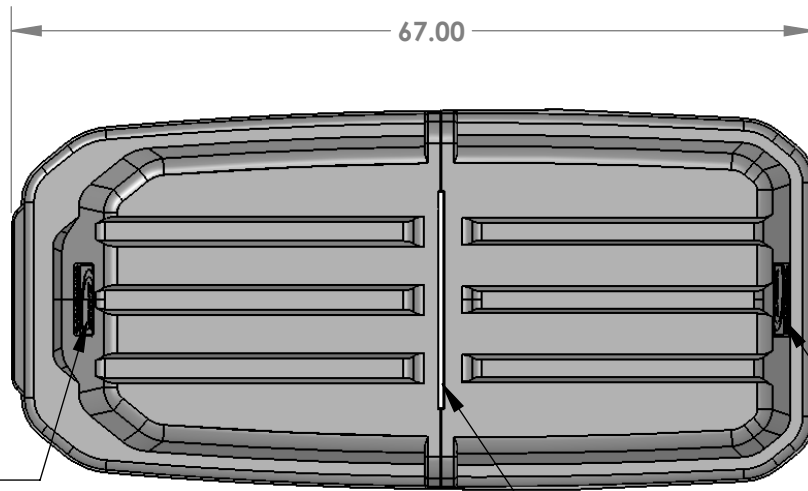
THE INFORMATION CONTAINED IN THIS DRAWING IS THE SOLE PROPERTY OF SUNCAST CORPORATION. ANY REPRODUCTION IN PART OR WHOLE WITHOUT THE WRITTEN PERMISSION OF SUNCAST CORPORATION IS PROHIBITED.

- NOTES:**
- All Tooling requirements must follow the "Suncast Blow Mold Specification Document"
 - Parting Line locations must be approved by Suncast Corporation Tooling and Design Engineering Department prior to construction of mold.
 - Unless Otherwise Specified:
No Draft is present on the outside walls.
Nominal wall to be **0.150"**.
Tops of all outside walls to have 0.125" R MIN.
 - Material: MDPE
Shrinkage: 0.016 in./in.
 - Engraving: (Unless otherwise specified)
Letter I.D. to be 0.250" Tall
Part Description to be 0.250" Tall
Mold # "601008" to be 0.250" Tall
Part # "0510802, 4" to be 0.250" Tall

Numbers to be clean, legible, and 0.020" deep.

SUNCAST "Made in USA" is required.

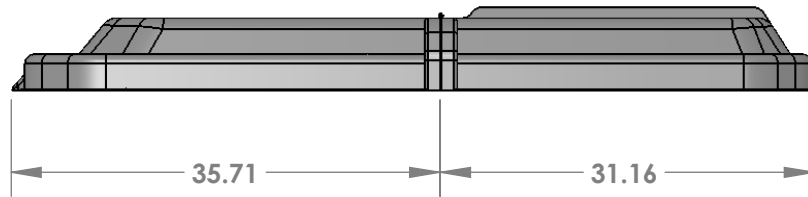
MDPE-4 Recycle Logo is required.
 - Dimensions on 2-D drawing are for reference only. 3-D solid model should be used for exact dimensions except where specifically noted on 2-D drawing.
 - Color of resin parts must be approved by SCC before start of production.
 - 8. Piano hinge and fasteners to be provided by SCC.**



MOLDED SCC LOGO

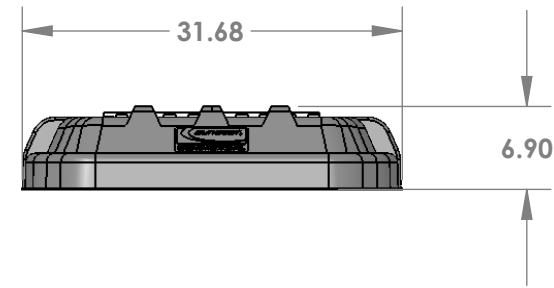
MOLDED SCC LOGO

18" SS PIANO HINGE



35.71


31.16



31.68

6.90

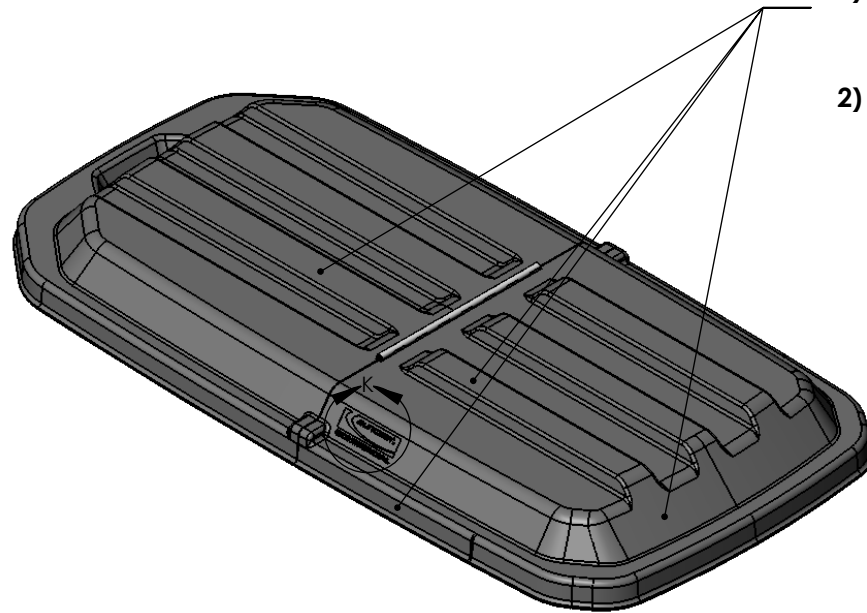
X CRITICAL DIMENSION
QC INSPECTION REQUIRED

REVISIONS			
REV.	BY	DATE	DESCRIPTION
			<small>ISO GENERATED DRAWING. DO NOT MANUALLY UPDATE. (CIRCLED) REVISION DATE</small>  SunCast Corporation 701 North Kirk Road Batavia, IL 60510 USA
			PART # 0510XXX MOLD # 6010XX MATERIAL MDPE WEIGHT 14-17 Lbs.
			RMTT75 HINGED LID PD - 2475_X
			<small>TOLERANCES ARE: FRACTIONS DECIMALS ANGLES ±1/64" .XX±.01 .XX±1° .XXX±.005</small>
			<small>SCALE: 1:1 DO NOT SCALE DRAWING SHEET 1 OF 1</small>


THE INFORMATION CONTAINED IN THIS DRAWING IS THE SOLE PROPERTY OF SUNCAST CORPORATION. ANY REPRODUCTION IN PART OR WHOLE WITHOUT THE WRITTEN PERMISSION OF SUNCAST CORPORATION IS PROHIBITED.

Texture Callouts:

- 1) Cavity Surfaces to be textured with:
A) 36 GRIT BEAD BLAST
- 2) A 2D rendering of Cavity Side must be submitted to Sunscast for approval prior to any texturing.



X CRITICAL DIMENSION
QC INSPECTION REQUIRED

REVISIONS			
REV.	BY	DATE	DESCRIPTION
PART #		SUNCAST CORPORATION	
0510XXX		701 North Kirk Road	
MOLD #		Batavia, IL 60510 USA	
6010XX			
MATERIAL		RM7T75 HINGED LID	
MDPE		<small>UNLESS OTHERWISE SPECIFIED: DIMENSIONS ARE IN INCHES TOLERANCES ARE: FRACTIONS DECIMALS ANGLES</small>	
WEIGHT		<small>±1/64" .XX±.01 .XX±1° .XXX±.005</small>	
14-17 Lbs.		<small>SCALE: 1:1 DO NOT SCALE DRAWING SHEET 1 OF 1</small>	